

## LADIES SHOE REPAIR

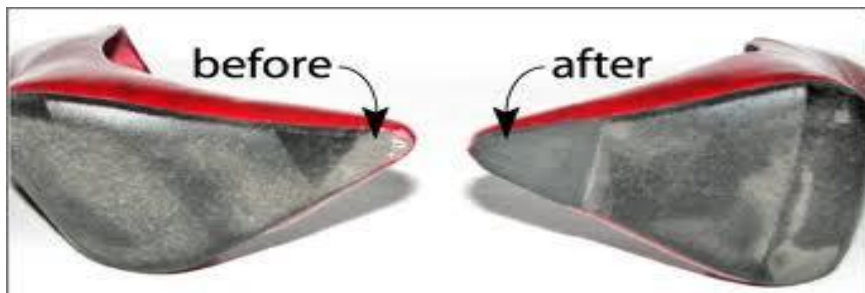
Ladies' Heel may be made of rubber, leather, or other material, serving as the thin layer that touches the ground and goes under the heel of the foot.



Ladies dowel heels



Ladies reg toplifts



Toe Pieces is an alternative to replacing the entire sole. A small portion of the front of the sole is replaced with the same material as the original sole.



Sole Guards/Protective Soles are thin, high quality rubber soles that go on top of an existing sole. Protective soles provide much better traction and greater longevity for the bottom of the shoe.

### **Christian Louboutin**



Red sole Guards/Protective soles. Thickness –  
1mm or 1.8mm



Half Soles are made of leather or rubber, most often used as replacements for the original bottom of a ladies shoe. The bottom portion goes from the shank of the shoe to the toes, sparing the back portion of the sole that extends to the heel.

## MENS SHOE REPAIR



Rubber Heels come in various sizes and shapes, known to be longer lasting and less expensive than combination or leather heels.



Combination Heel is a top-lift that is made of leather in combination with a rubber back. The rubber on the back of the heel provides better traction and wear.



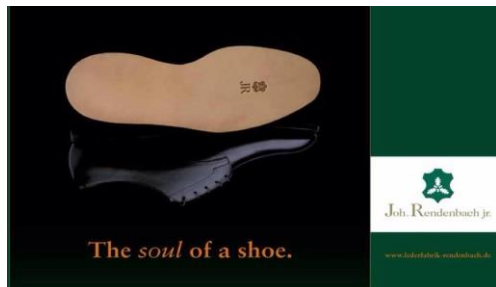
Sole Guard or Protective Sole is a rubber layer placed on top of an existing men's sole. This provides better traction and longer wear.



Half Soles, leather or rubber, extend from the shank of the shoe through the toe and involves the replacement of the soles in that area.



Full Soles & Heels is the replacement of the entire bottom of a shoe or boot.



## Ask for the best

- Lasts at least twice as long, sometimes more.
- Highly water resistant from the oak bark tannage.
- No man made tanning agents that wash out in the rain like most others.
- No painted finish to hide blemishes.
- Every pair is guaranteed against low quality or it is replaced free of charge.
- The hide part the JR soles are cut from is only the best cut, no belly leather.

Oak-bark tanned sole from Joh. Rendenbach ("JR") IN Germany. Because of the tight grain of oak-bark tanned leather soles, they wear longer and require more infrequent replacing.

At JR Leather they work hand in hand with nature to ensure their leather has the comfortable wear, durability and active breathing that their customers so value. We steadfastly employ the century old method of traditional ground tanning, work exclusively with first class raw material from Europe's best and most expensive provenance and subject the entire production process to a stringent quality control.

Traditional oak-bark ground tanning is a process involving biodegradable tanning agents such as bark and fruit. This ecological tanning method results in an especially long lasting and dermatologically kind product. Leather with the JR-brand label is waterproof and extremely abrasion resistant, tough yet flexible, very comfortable to wear and optically distinguished by its attractive grain and warm, wood color.

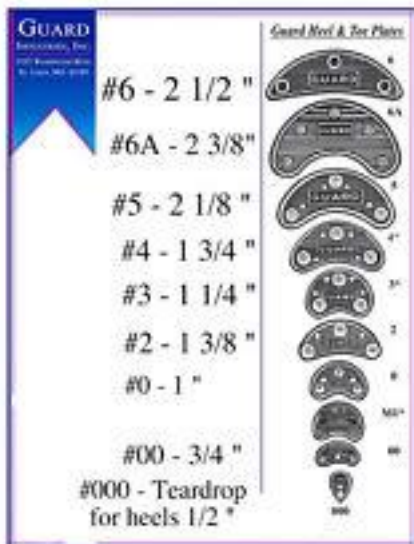
## BIRKENSTOCK



Full Soles (Birkenstock) can

be replaced with the same material as the Original Equipment Manufacturer.

New Birkenstock footbeds can be replaced.



Heel and toe cleats. Plastic and metal

## WESTERN BOOTS



Rubber heels



Sole Guard or Protective Sole is a rubber layer placed on top of an existing boots sole. This provides better traction and longer wear.



Half Soles (Leather or Rubber) extend from the shank of the shoe to the toes and involve the replacement of the soles in that area.

## ORTHOPEDIC SHOE BUILDUPS

Leg length differences are very common due to injuries, hip or knee surgeries, or congenital reasons. They can be easily accommodated however with an orthopedic build-up.

We offer Quality Correction Services that allows you to wear almost any shoe while still providing for your orthopedic needs.

What we do is split the sole at the bottom of any shoe of men, women, and children, add the build up to the specified size, taper at the toe, then reattach the original bottom of the shoe. This creates an aesthetically appealing look while alleviating pain in the foot, leg, hip, and back caused by the limb length discrepancy. In situations that the sole can't be split, we apply the buildup directly on the sole of the shoe and use a thin out soling material



1/2" shoe lift



## REPLACEMENT FULL SOLES



Goodyear One GT2 (Black)



w/yellow inlay)

Goodyear Telos full sole (oil resistant) (Black



w/yellow inlay)

Goodyear Aradia full sole (oil resistant) (Black



Brown)

Goodyear Chem 60 Rancher full sole (Black,



Goodyear MTR full sole (Black)



### Goodyear 4 x 4 full sole

Based on the famous Goodyear Wrangler tire series, this tread is designed for outdoor grip and aggressive cosmetics. Like the 4 x 4 truck, this sole offers great traction and is a dependable tough bottom. OIL RESISTANT (Black)



Goodyear Assurance

Comfort Grip Soles. Light weight and slip resistant.



1743 Bolgna casual/dress sole (Black & Brown)



2345 Line lite sole (Black, Brown)



1716 Gumlite Oxford full sole (Black, Brown, Red)



\*Vibram #132 Montagna full sole (Black, Honey)



#148 Kletterlift full sole (Black)



natural)

Vibram #4014 Christy wedge full sole (black,

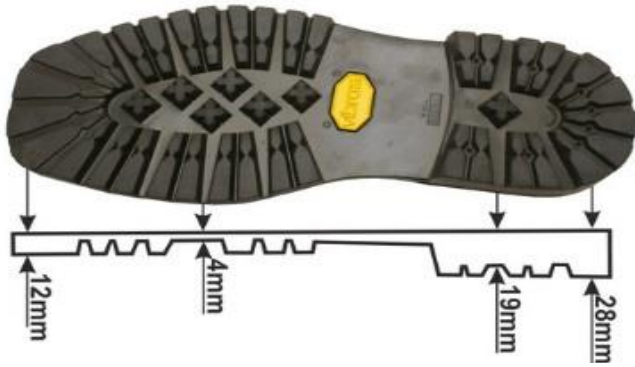


Vibram #1012 Silvto sole (Black)



Vibram #2094 Lienz Red Sole. Blocker rubber sole, featuring islands with a non-slip Vibram design. For its excellent resistance to wear and high non-slip capacity together with the classic heel step (1.5 mm), this sole is recommended for resoling/manufacturing elegant shoes. \$75pr





Vibram 1149 lug sole. Colors available: Black, Gum/Beige, Lime Green, Orange, Red

**Blocker rubber sole featuring the classic Vibram mountain design and with squared template. For its excellent resistance to wear and high non-slip capacity, together with the maximum height of the heel 28mm.**

**\$85pr**



Camel colors)

Walkbase full soles. (Black, Brown &